

# QuickGuide

## QuickTox™ Kit for DON

# 2 ppm

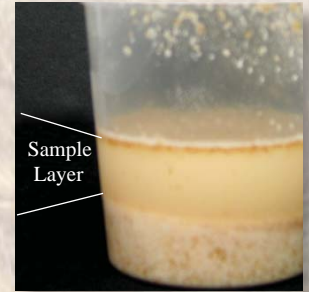
Test Procedure (have strips and Buffer ready at room temperature)



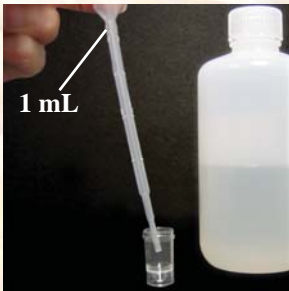
1. Add 10 gram sub-sample to container



2. Add 50 mL tap water (room temperature), shake 30 seconds



3. Allow to settle into two layers - top layer is where sample is taken



4. With large transfer pipette, add 1 mL Buffer to vial



5. With the small fixed-volume pipette, add sample extract to vial; stir well with tip

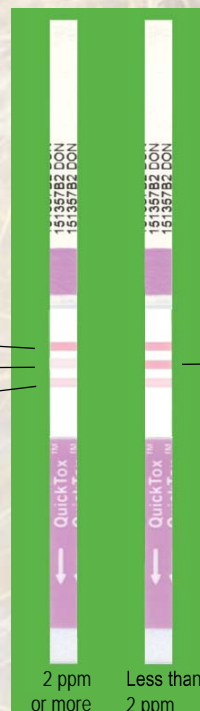


6. Add test strip. Wait 3-5 minutes and read result while strip is still wet

### Test Interpretation

Three lines will form

- Top line is the **Control Line**
- Middle line is the **Test Line**
- Bottom line is the **Reference Line**



Compare the Test Line with the Reference Line

If the Test Line color intensity is darker than the Reference Line:  
**Sample contains less than 2 ppm**