

QuickComb™ Kit for Corn QuickGuide

Sample Preparation



1. Determine sample weight, place in properly sized jar

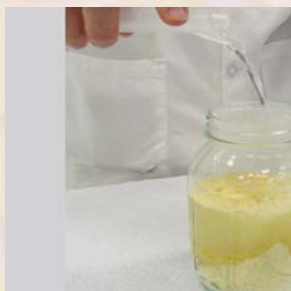


2. Cover blender and grind



Alternatively, grind with coffee grinder

Test Procedure



1. Measure and add water to jar or bag



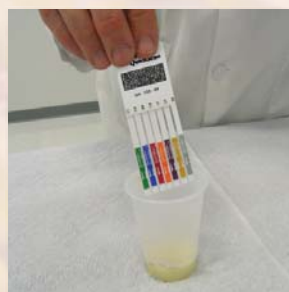
2. Seal container, shake to wet entire sample



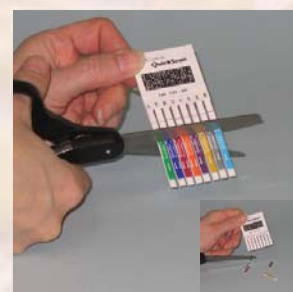
3. Transfer 2 pipettes of extract to sample cup



4. Alternatively, pour from jar or bag into cup



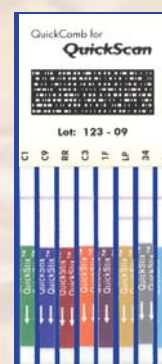
5. Insert comb into cup with arrows pointing down; wait 5 minutes



6. To retain results, cut off tailpads. For QuickScan, cut tailpads & scan immediately

Test Interpretation

Protein/Trade Name	Sensitivity
Cry1Ab/Bt11, YieldGard Corn Borer	0.8% (~6 kernels in 800)
Cry9C/StarLink	0.125% (1 kernel in 800)
Event 603/Roundup Ready	0.5% (4 kernels in 800)
Cry3Bb/YieldGard Rootworm	0.5% (4 kernels in 800)
Cry1F/Herculex I	0.5% (4 kernels in 800)
T25/Liberty Link	0.5% (4 kernels in 800)
Cry34/Herculex RW	0.5% (4 kernels in 800)
mCry3A/Agrisure RW	1.0% (8 kernels in 800)



If two lines form, the sample is **positive**

Control Lines always need to be present