

QuickGuide

QuickTox Kit for QuickScan

- Aflatoxin

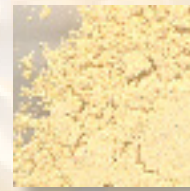
Sample Preparation



Collect and grind a representative sample to a 20 mesh screen size



Ground too coarse = improper extraction



Ground too fine = extract may require longer settling time

Test Procedure

(more detailed instructions in the Product Insert)

Be sure that the Multi-Matrix Barcode Card has been scanned for the kit lot being utilized for testing.

They are included in every kit box, but only need to be scanned once per lot.



Open scanner lid, place MMBC face-down, close lid, and click "Read Test" to load lot-specific data onto QuickScan.



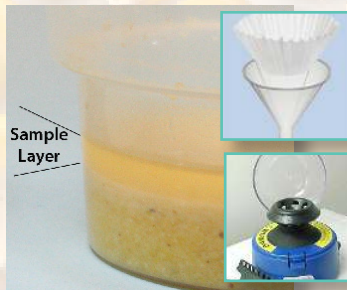
1. Add a 20 to 50 gram sub-sample to container



2. Add 2 mL/gram of 50% ethanol (example: 40 mL for 20 gram sample)



3. Shake 1 minute on mechanical shaker or by hand for 1½ - 2 minutes



4. Allow to settle into two layers (sample is taken from top layer). Alternatively, filter or centrifuge (Refer to Application Guides for instructions)



5. Add 100 µL Buffer to vial, then using a new pipette tip, add 100 µL sample to vial



6. Stir well with pipette, then add test strip; wait 5 minutes for results

QuickScan Test

Results

(Read single strip, multiple strips, or single strip with a QuickComb—more detailed instructions in the QuickScan User Manual)

7. Remove strip from vial immediately after 5 minutes. Cut off and discard bottom pad with arrow tape. (No drying step!)

8. Place in the QuickScan carrier and slide carrier in. Click "Read Test" on Main Menu. Aflatoxin results are reported between 2.5 ppb and 30 ppb. (A simple dilution step will yield quantitative results above the listed upper limits -- see Product Insert)

9. Results Screen will appear when scanning is complete. Enter sample identification data and use buttons to save or print report.