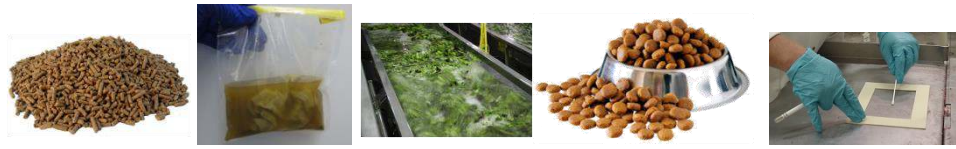


COLLECT SAMPLE & ENRICH



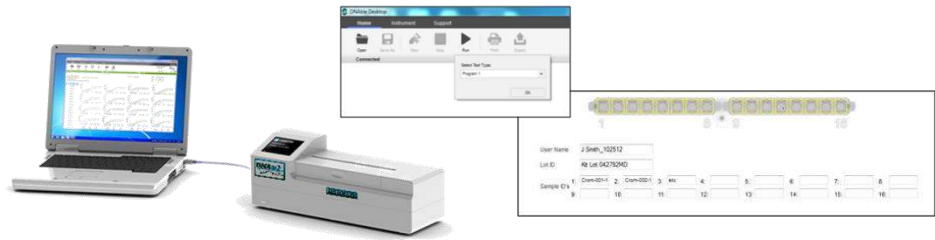
Pellets, swabs, rinses, kibble, etc. – DNable is extremely tolerant of crude sample matrices. Choose a Sample Extraction Set to match your matrix. Mix sample with BPW plus DNable's *Salmonella* Supplement, and incubate overnight at 37°.

EXTRACT SAMPLE



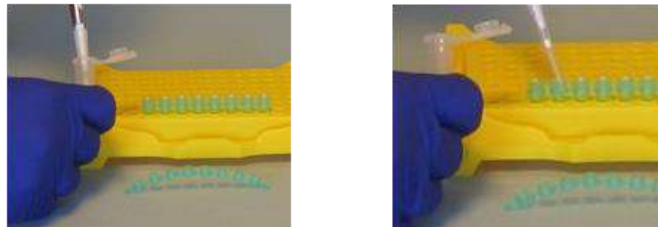
Sample Set 1, mix enriched sample with MB2 Buffer and heat at 98° for 15 minutes
Sample Set 2, mix enriched sample with MB3 Buffer and heat at 95° for 10 minutes

BOOT UP



Meanwhile, turn on DNable reader and start software – enter Sample ID data before starting assay.

ADD TO REACTION BUFFER



Add extracted sample to RBI Reaction Buffer vials – cap and mix.

TRANSFER TO MASTER MIX TUBES



Transfer buffered sample to Master Mix vials and cap.

READ WITH DNABLE READER



Place vials in DNable reader, close lid, and press start. After 15 minutes, software will display results.