

### SAMPLE PREPARATION



1. Determine sample weight for the number of kernels tested



2. Grind a representative sample with Bunn Grinder



Or, use an alternate method of grinding

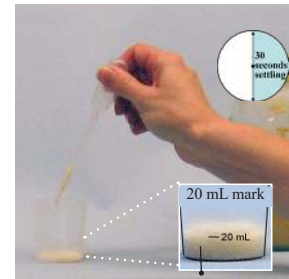
### TEST PROCEDURE



1. Measure and add ground corn and water to jar or bag\*



2. Seal container, shake to wet entire sample, settle 30 seconds



3. Pipette into cup to 20 mL line; settle 30 seconds

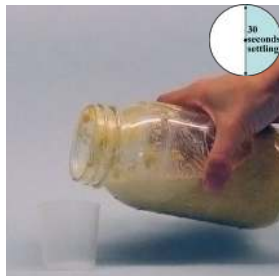
\*Weigh out sample, then calculate the volume of water needed

Grams of Corn x 1.5 = mL of water

For example, 800 kernels with average seed weight of 0.3g:

(800 kernels x 0.3g) = 240g of ground corn

240g x 1.5 = 360 mL water



4. Alternatively, pour from jar or bag to the 20 mL line; settle 30 seconds



5. Insert comb into cup with arrows pointing down; wait 5 minutes



6. To retain results, cut off tail-pads. For QuickScan, cut tailpads & scan immediately

### TEST INTERPRETATION

Protein/Trade Name	Sensitivity
Cry1Ab/Bt11, YieldGard Corn Borer	0.8% (~6 kernels in 800)
Event 603/Roundup Ready	0.5% (4 kernels in 800)
Cry3Bb/YieldGard Rootworm	0.5% (4 kernels in 800)
Cry1F/Herculex I	0.5% (4 kernels in 800)
T25/Liberty Link	0.5% (4 kernels in 800)
Cry34/Herculex RW	0.5% (4 kernels in 800)
mCry3A/Agrisure RW	0.9% (~8 kernels in 800)
Cry2A/in SmartStax (MON98034)	0.9% (~8 kernels in 800)
Vip3A/Viptera	0.25% (2 kernels in 800)
eCry3.1Ab/Duracade	0.1% (~1 kernel in 800)



Control Lines confirm test is valid

If two lines form, the sample is positive