

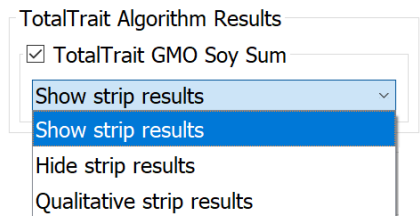
Welcome to QuickScan 5.6

This document illustrates features in the latest QuickScan software upgrades, and also contains some instructions on how to utilize these new features.

| | |
|-------------------------------------|---|
| TotalTrait GMO Combs | You can now opt to display only the summed results |
| Suppliers and Locations | Easier importing options , as well as new drop-down lists for Suppliers, Locations and Bins |
| Results Screen | Matrix Group name will auto-fill for most kits; for those with multiple matrices in a Matrix Group, a dropdown will appear |
| Suppliers tab under Set Up | Maintain an accurate and consistent Suppliers list |
| Automatic Sample ID | Software can assign unique and customizable Sample IDs instead of manual entry |
| Analyze Feature improvements | Improved visibility into suppliers, enhanced views, and customizable data analysis |
| GMO TotalTrait Sum | Program can be enabled to utilize custom algorithms to more closely relate to PCR GMO scores |

Display of GMO Summed Results:

There is now the option to hide or display only positive/negative individual strip results when using the TotalTrait GMO Sum algorithm. (If you missed the TotalTrait GMO details in prior releases, there are more details on page 3.)



| Test Kit | Analyte | Result(%) |
|-------------------------------|---------------|--------------|
| AQ-076 TC 2367 | RS: CP4 EPSPS | 2.8 |
| | DM: DMO | < LOD |
| | LS: PAT/pat | 1.1 |
| | 2M: 2mEPSPS | < LOD |
| TotalTrait GMO Soy Sum | | 3.9 |

Show strip results

| Test Kit | Analyte | Result(%) |
|-------------------------------|---------------|------------|
| AQ-076 TC 2367 | RS: CP4 EPSPS | |
| | DM: DMO | |
| | LS: PAT/pat | |
| | 2M: 2mEPSPS | |
| TotalTrait GMO Soy Sum | | 3.9 |

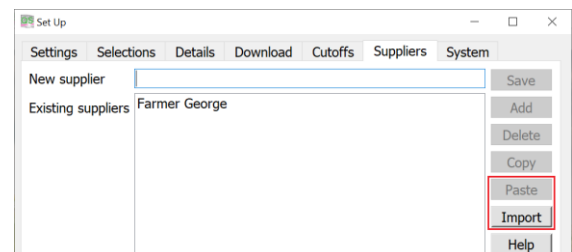
Hide strip results

| Test Kit | Analyte | Result(%) |
|-------------------------------|---------------|-----------------|
| AQ-076 TC 2367 | RS: CP4 EPSPS | Positive |
| | DM: DMO | Negative |
| | LS: PAT/pat | Positive |
| | 2M: 2mEPSPS | Negative |
| TotalTrait GMO Soy Sum | | 3.9 |

Qualitative strip results

Importing Suppliers:

The Suppliers tab has been improved even more. (If you missed it in the last release, there are more details on page 2.) Furthering the goal of standardizing Supplier information, you can populate your Supplier lists using import functions. And during testing, those Suppliers, as well as locations and bins, are available via drop-down menus in the Results screen.



Results Screen:

“Matrix” column will now auto-fill for most kits. For kits with matrix groups containing multiple matrices, a drop-down menu will appear. Only the matrices associated with that particular matrix group will appear (no manual entry).

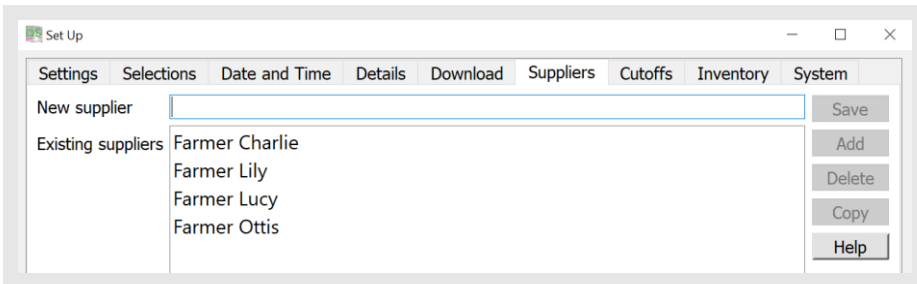
| Lot | Matrix | Matrix Group | Bin |
|-----|------------|--------------|-----|
| 803 | ▼ | 211 FM MG2 | |
| 803 | | 211 FM MG2 | |
| 803 | Corn flour | 211 FM MG2 | |
| 803 | DDGS | 211 FM MG2 | |
| 803 | ▼ | 211 FM MG2 | |
| 803 | ▼ | 211 FM MG2 | |

Suppliers tab in Set Up:

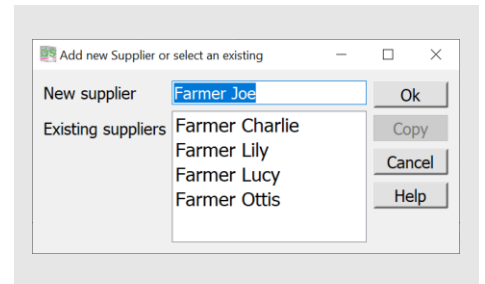
To help you maintain an accurate and consistent Suppliers list, we have added a Suppliers tab under Set Up. Here, suppliers can be added, edited, or removed.

Especially when analyzing, reviewing and charting sample results by supplier, having them listed with multiple spellings is a major obstacle in clear understanding of your data.

And don’t worry if you need to add a supplier in the middle of testing – in the Results screen you still have the opportunity to add a new supplier. That entry will be added to the list of existing suppliers.



Suppliers – under Set Up



Suppliers – in Results screen

Analyze Feature Improvements

The Analyze function in QuickScan gives you on-board analytics for the various test kits and suppliers that are entered and stored in the DataLog. These at-a-glance charts can be accessed and viewed all within the QuickScan testing environment.

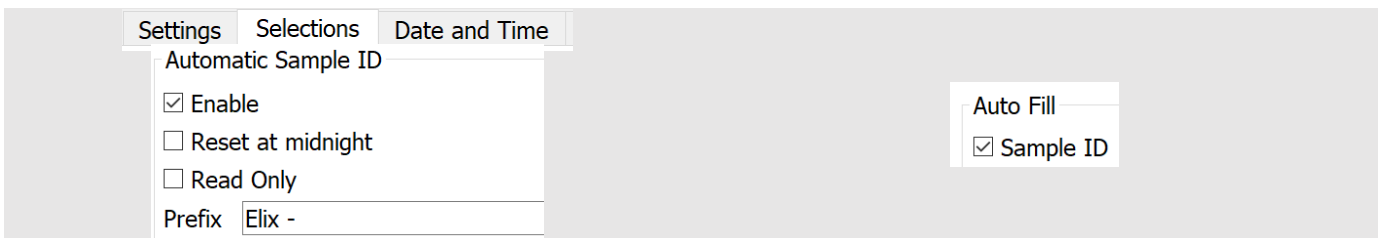
Please visit envirologix.com/support under System Guides to find a how-to document with detailed instructions on how to use Analyze within QuickScan.

New Automatic Sample ID creator

Instead of inventing your own Sample ID’s, you can let QuickScan software assign one for you. Once turned on, it will automatically fill in an ID of “1” on the next sample run. You can add a custom prefix to that Sample ID number if you’d like; for example, your facility nickname, city, custom location identification, etc. And you can either let those numbers continue to run, or reset at midnight to restart at 1 for the next day.

Under “Selections” tab, check “Enable” under Automatic Sample ID to activate. Add your desired prefix here (if any), and whether you want the number to reset at midnight.

The default setting will assign a unique number to each test. If you prefer to have one Sample ID assigned to, for example, a TotalTox Comb which contains 3 or 4 different mycotoxin tests, you can go to Selections, Auto Fill, and check the box next to “Sample ID.”



Set your preferences in Selections tab

Adjust how ID applies to multiple tests in one scan

TotalTrait GMO Soy Sum

When used in conjunction with TotalTrait Comb for Soy, this software utilizes a custom algorithm to more accurately determine GMO presence of today’s traits and varieties. Using the TotalTrait Comb for Soy, QuickScan’s powerful integrated software can differentiate between expression levels of proteins in various stacked traits, and return a result that more closely aligns with PCR—taking the guesswork out of testing and leveraging all the capabilities of QuickScan and TotalTrait technologies.

| Sample ID | Supplier | Comment 1 | Comment 2 | Action | Test Kit | Analyte | Result(%) |
|-----------|----------|-----------|-----------|--------|----------------|---------------------------------|-----------|
| 1 | | | | Accept | AQ-076 TC 2367 | RS: CP4 EPSPS | < LOD |
| 2 | | | | | | DM: DMO | < LOD |
| 3 | | | | | | LS: PAT/pat | >3.0 |
| 4 | | | | | | 2M: 2mEPSPS | 0.31 |
| 5 | | | | | | GMO Soy Sum = | ≥ 3.31 |
| 6 | | | | | | TotalTrait GMO Soy Sum = | ≥ 0.31 |

You can review details on how to engage this feature in the [prior feature summary](#), or you can contact Tech Support if you need help.